

PEFY-P-VMM-E

PEFY-P-VMM-E

1. SPECIFICATIONS	IU-B- 2
2. EXTERNAL DIMENSIONS	IU-B- 5
3. ELECTRICAL WIRING DIAGRAMS	IU-B- 9
4. SOUND LEVELS	
4-1. Sound levels	IU-B- 11
4-2. NC curves	IU-B- 11
4-3. Fan characteristics curves	IU-B- 16
5. Optional parts for PEFY-P-VMM-E	IU-B- 18

- A
- B**
- C
- D
- E
- F
- G
- H
- V_a
- V_b
- BC
- CT

Ceiling concealed	P20	P25	P32	P40	P50	P63	P80	P100	P125	P200	P250		
	0.8HP	1.0HP	1.3HP	1.6HP	2.0HP	2.5HP	3.2HP	4.0HP	5.0HP	8.0HP	10.0HP		
PEFY-P-VMM-E	●	●	●	●	●	●	●	●	●				

1. SPECIFICATIONS

R410A Data G4

Model			PEFY-P20VMM-E	PEFY-P25VMM-E	PEFY-P32VMM-E	PEFY-P40VMM-E	
Power source			1-phase 220-240V 50Hz				
Cooling capacity (Nominal)	*1	kW	2.2	2.8	3.6	4.5	
		kcal / h	1,900	2,400	3,100	3,900	
		Btu / h	7,500	9,600	12,300	15,400	
	*2	kcal / h	2,000	2,500	3,150	4,000	
		Power input	kW	0.15	0.15	0.17	0.19
Current input		A	0.73	0.73	0.81	0.92	
Heating capacity (Nominal)	*3	kW	2.5	3.2	4.0	5.0	
		kcal / h	2,200	2,800	3,400	4,300	
		Btu / h	8,500	10,900	13,600	17,100	
	Power input	kW	0.15	0.15	0.17	0.19	
		Current input		A	0.73	0.73	0.81
External finish			Galvanized				
External dimension H x W x D		mm	295 x 815 x 700	295x815x700	295x815x700	295x935x700	
		in.	11-5/8" x 32-1/8" x 27-9/16"	11-5/8" x 32-1/8" x 27-9/16"	11-5/8" x 32-1/8" x 27-9/16"	11-5/8" x 36-13/16" x 27-9/16"	
Net weight		kg (lb)	27 (60)	27 (60)	27 (60)	33 (73)	
Heat exchanger			Cross fin (Aluminum fin and copper tube)				
FAN	Type x Quantity		Sirocco fan x 1	Sirocco fan x 1	Sirocco fan x 1	Sirocco fan x 2	
	External static press.	Pa	30- 50- 100	30- 50- 100	30- 50- 100	30- 50- 100	
		mmH ₂ O	3.1- 5.1- 10.2	3.1- 5.1- 10.2	3.1- 5.1- 10.2	3.1- 5.1- 10.2	
	Motor type			1-phase induction motor			
	Motor output		kW	0.075	0.075	0.075	0.075
	Driving mechanism			Direct-driven by motor			
	Airflow rate (Low-Mid-High)	m ³ / min		6.0 - 7.2 - 8.5	6.0 - 7.2 - 8.5	7.5-9.0-10.5	10.0-12.0-14.0
		L / s		100 - 120 - 142	100 - 120 - 142	125-150-175	167-200-233
cfm		212 - 254 - 300	212 - 254 - 300	265-318-371	353-424-494		
Noise level (Low-Mid-High) (measured in anechoic room)		dB <A>	27-30-32	27-30-32	28-32-35	31-34-37	
Insulation material			Polyethylene foam, Urethane foam				
Air filter			PP honeycomb fabric (washable)				
Protection device			Fuse				
Refrigerant control device			LEV				
Connectable outdoor unit			R410A, R407C, R22 CITY MULTI				
Diameter of refrigerant pipe	Liquid (R410A) (R22, R407C)	mm (in.)	ø6.35 (ø1/4") Flare	ø6.35 (ø1/4") Flare	ø6.35 (ø1/4") Flare	ø6.35 (ø1/4") Flare	
		mm (in.)	ø6.35 (ø1/4") Flare	ø6.35 (ø1/4") Flare	ø6.35 (ø1/4") Flare	ø6.35 (ø1/4") Flare	
	Gas (R410A) (R22, R407C)	mm (in.)	ø12.7 (ø1/2") Flare	ø12.7 (ø1/2") Flare	ø12.7 (ø1/2") Flare	ø12.7 (ø1/2") Flare	
Field drain pipe size		mm (in.)	Socket(R1)+R1(PT1)[O.D. 34mm(1-11/32") or O.D.32mm(1-1/4") if using optional Drain pump.				
Drawing	External		IU - W65-3948				
	Wiring		IU - W65-3958				
	Refrigerant cycle		-				
Standard attachment	Document		Installation Manual, Instruction Book				
	Accessory						
Remark	Optional parts						
	Circular duct flange		PAC-KE32EDF-F	PAC-KE32EDF-F	PAC-KE32EDF-F	PAC-KE50EDF-F	
	Drain pump		PAC-KE03DM-F	PAC-KE03DM-F	PAC-KE03DM-F	PAC-KE03DM-F	
	Installation		Details on foundation work, duct work, insulation work, electrical wiring, power source switch, and other items shall be referred to the Installation Manual.				
Note :			*:1 Nominal cooling conditions	*:2 Nominal cooling conditions	*:3 Nominal heating conditions	Unit converter	
Indoor :			27° CDB/19° CWB (81° FDB/66° FWB)	27° CDB/19.5° CWB (81° FDB/67° FWB)	20° CDB (68° FDB)	kcal/h = kW x 860	
Outdoor :			35° CDB (95° FDB)	35° CDB (95° FDB)	7° CDB/6° CWB (45° FDB/43° FWB)	Btu/h = kW x 3,412	
Pipe length :			7.5 m (24-9/16 ft)	5 m (16-3/8 ft)	7.5 m (24-9/16 ft)	cfm = m ³ /min x 35.31	
Level difference :			0 m (0 ft)	0 m (0 ft)	0 m (0 ft)	lb = kg / 0.4536	
* Nominal conditions *:1, *:3 are subject to JIS B8615-1.						*Above specification data is subject to rounding variation.	
* Due to continuing improvement, above specification may be subject to change without notice.							

Ref.: Spec_PEFY-P-VMM-E_1

1. SPECIFICATIONS

R410A Data G4

Model		PEFY-P50VMM-E	PEFY-P63VMM-E	PEFY-P80VMM-E		
Power source		1-phase 220-240V 50Hz				
Cooling capacity (Nominal)	*1	kW	5.6	7.1	9.0	
		kcal / h	4,800	6,100	7,700	
		Btu / h	19,100	24,200	30,700	
	*2	kcal / h	5,000	6,300	8,000	
		Power input	kW	0.2	0.22	0.25
	Current input	A	0.98	1.07	1.15	
Heating capacity (Nominal)	*3	kW	6.3	8.0	10.0	
		kcal / h	5,400	6,900	8,600	
		Btu / h	21,500	27,300	34,100	
	Power input	kW	0.2	0.22	0.25	
		Current input	A	0.98	1.07	1.15
External finish		Galvanized				
External dimension H x W x D		mm	295 x 935 x 700	295 x 1,175 x 700	295 x 1,175 x 700	
		in.	11-5/8" x 36-13/16" x 27-9/16"	11-5/8" x 46-5/16" x 27-9/16"	11-5/8" x 46-5/16" x 27-9/16"	
Net weight		kg (lb)	33 (73)	42 (93)	42 (93)	
Heat exchanger		Cross fin (Aluminum fin and copper tube)				
FAN	Type x Quantity		Sirocco fan x 2	Sirocco fan x 2	Sirocco fan x 2	
	External static press.	Pa	30- 50- 100	30- 50- 100	30- 50- 100	
		mmH ₂ O	3.1- 5.1- 10.2	3.1- 5.1- 10.2	3.1- 5.1- 10.2	
	Motor type		1-phase induction motor			
	Motor output	kW	0.075	0.078	0.078	
	Driving mechanism		Direct-driven by motor			
	Airflow rate (Low-Mid-High)	m ³ / min	12.0-14.5-17.0	13.5-16.2-19.0	14.5-18.0-21.0	
L / s		200-242-283	225-270-317	242-300-350		
cfm		424-512-600	477-572-671	512-636-742		
Noise level (Low-Mid-High) (measured in anechoic room)		dB <A>	31-35-38	31-35-38	32-36-39	
Insulation material		Polyethylene foam, Urethane foam				
Air filter		PP honeycomb fabric (washable)				
Protection device		Fuse				
Refrigerant control device		LEV				
Connectable outdoor unit		R410A, R407C, R22 CITY MULTI				
Diameter of refrigerant pipe	Liquid (R410A) (R22, R407C)	mm (in.)	ø6.35 (ø1/4") Flare	ø9.52 (ø3/8") Flare	ø9.52 (ø3/8") Flare	
			ø9.52 (ø3/8") Flare	ø9.52 (ø3/8") Flare	ø9.52 (ø3/8") Flare	
	Gas (R410A) (R22, R407C)	mm (in.)	ø12.7 (ø1/2") Flare	ø15.88 (ø5/8") Flare	ø15.88 (ø5/8") Flare	
			ø15.88 (ø5/8") Flare	ø15.88 (ø5/8") Flare	ø15.88 (ø5/8") Flare	
Field drain pipe size		mm (in.)	Socket(R1)+R1(PT1)[O.D. 34mm(1-11/32")] or O.D.32mm(1-1/4") if using optional Drain pump.			
Drawing	External		IU - W65-3948			
	Wiring		IU - W65-3958			
	Refrigerant cycle		-			
Standard attachment	Document		Installation Manual, Instruction Book			
	Accessory					
Remark	Optional parts					
	Circular duct flange		PAC-KE50EDF-F	PAC-KE80EDF-F	PAC-KE80EDF-F	
	Drain pump		PAC-KE03DM-F	PAC-KE03DM-F	PAC-KE03DM-F	
	Installation		Details on foundation work, duct work, insulation work, electrical wiring, power source switch, and other items shall be referred to the Installation Manual.			

Note :

*1 Nominal cooling conditions	*2 Nominal cooling conditions	*3 Nominal heating conditions	Unit converter
Indoor : 27° CDB/19° CWB (81° FDB/66° FWB)	27° CDB/19.5° CWB (81° FDB/67° FWB)	20° CDB (68° FDB)	kcal/h = kW x 860
Outdoor : 35° CDB (95° FDB)	35° CDB (95° FDB)	7° CDB/6° CWB (45° FDB/43° FWB)	Btu/h = kW x 3,412
Pipe length : 7.5 m (24-9/16 ft)	5 m (16-3/8 ft)	7.5 m (24-9/16 ft)	cfm = m ³ /min x 35.31
Level difference : 0 m (0 ft)	0 m (0 ft)	0 m (0 ft)	lb = kg / 0.4536

* Nominal conditions *1, *3 are subject to JIS B8615-1.
 * Due to continuing improvement, above specification may be subject to change without notice.

*Above specification data is subject to rounding variation.

Ref.: Spec_PEFY-P-VMM-E_2

1. SPECIFICATIONS

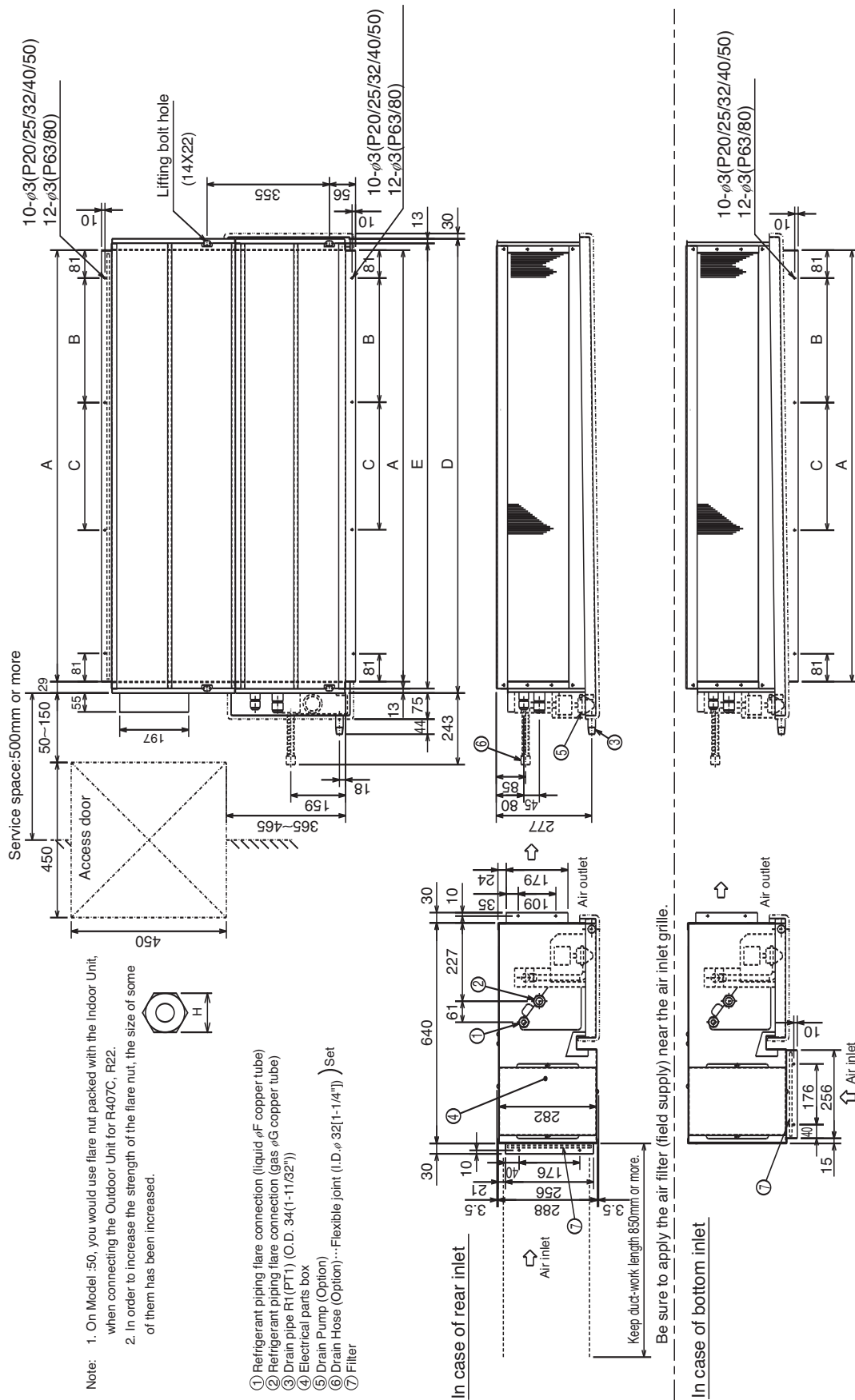
R410A Data G4

Model		PEFY-P100VMM-E	PEFY-P125VMM-E			
Power source		1-phase 220-240V 50Hz				
Cooling capacity (Nominal)	*1	kW	11.2	14.0		
		kcal / h	9,600	12,000		
		Btu / h	38,200	47,800		
	*2	kcal / h	10,000	12,500		
	Power input	kW	0.29	0.4		
Current input	A	1.34	1.9			
Heating capacity (Nominal)	*3	kW	12.5	16.0		
		kcal / h	10,800	13,800		
		Btu / h	42,700	54,600		
	Power input	kW	0.29	0.4		
	Current input	A	1.34	1.9		
External finish		Galvanized				
External dimension H x W x D		mm	325 x 1,415 x 740	325 x 1,415 x 740		
		in.	12-13/16" x 55-3/4" x 29-3/16"	12-13/16" x 55-3/4" x 29-3/16"		
Net weight		kg (lb)	62 (137)	65 (144)		
Heat exchanger		Cross fin (Aluminum fin and copper tube)				
FAN	Type x Quantity		Sirocco fan x 2	Sirocco fan x 2		
	External static press.	Pa	50- 130	50- 130		
		mmH ₂ O	5.1- 13.3	5.1- 13.3		
	Motor type		1-phase induction motor			
	Motor output	kW	0.200	0.280		
	Driving mechanism		Direct-driven by motor			
	Airflow rate (Low-Mid-High)	m ³ / min	23.0 - 33.0	28.0 - 40.0		
		L / s	383 - 550	467 - 667		
cfm		812 - 1,165	989 - 1,413			
Noise level (Low-Mid-High) (measured in anechoic room)		dB <A>	40 - 44	42 - 45		
Insulation material		Polyethylene foam, Urethane foam				
Air filter		PP honeycomb fabric (washable)				
Protection device		Fuse				
Refrigerant control device		LEV				
Connectable outdoor unit		R410A, R407C, R22 CITY MULTI				
Diameter of refrigerant pipe	Liquid (R410A) (R22, R407C)	mm (in.)	ø9.52 (ø3/8") Flare ø9.52 (ø3/8") Flare	ø9.52 (ø3/8") Flare ø9.52 (ø3/8") Flare		
		Gas (R410A) (R22, R407C)	mm (in.)	ø15.88 (ø5/8") Flare ø19.05 (ø3/4") Flare	ø15.88 (ø5/8") Flare ø19.05 (ø3/4") Flare	
	Field drain pipe size		mm (in.)	Socket(R1)+R1(PT1)[O.D. 34mm(1-11/32")] or O.D.32mm(1-1/4") if using optional Drain pump.		
Drawing	External		IU - W65-3949	IU - W65-3949		
	Wiring		IU - W65-3959	IU - W65-3959		
	Refrigerant cycle		-	-		
Standard attachment	Document		Installation Manual, Instruction Book			
	Accessory					
Remark	Optional parts					
	Circular duct flange		PAC-KE125EDF-F	PAC-KE125EDF-F		
	Drain pump		PAC-KE03DM-F	PAC-KE03DM-F		
	Installation		Details on foundation work, duct work, insulation work, electrical wiring, power source switch, and other items shall be referred to the Installation Manual.			
Note :	*1 Nominal cooling conditions		*2 Nominal cooling conditions		Unit converter kcal/h = kW x 860 Btu/h = kW x 3,412 cfm = m ³ /min x 35.31 lb = kg / 0.4536 *Above specification data is subject to rounding variation.	
	Indoor :	27° CDB/19° CWB (81° FDB/66° FWB)	27° CDB/19.5° CWB (81° FDB/67° FWB)	20° CDB (68° FDB)		
	Outdoor :	35° CDB (95° FDB)	35° CDB (95° FDB)	7° CDB/6° CWB (45° FDB/43° FWB)		
	Pipe length :	7.5 m (24-9/16 ft)	5 m (16-3/8 ft)	7.5 m (24-9/16 ft)		
	Level difference :	0 m (0 ft)	0 m (0 ft)	0 m (0 ft)		
* Nominal conditions *1, *3 are subject to JIS B8615-1.						
* Due to continuing improvement, above specification may be subject to change without notice.						

Ref.: Spec_PEFY-P-VMM-E_3

PEFY-P20,25,32,40,50,63,80VMM-E

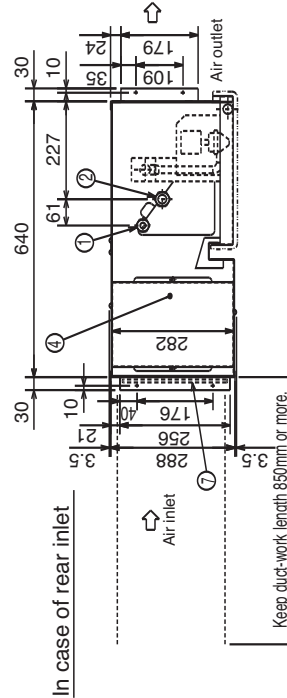
Draw. : IU-W65-3948
Unit : mm



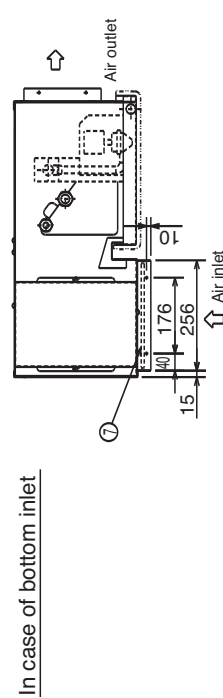
Note: 1. On Model :50, you would use flare nut packed with the Indoor Unit, when connecting the Outdoor Unit for R407C, R22.
2. In order to increase the strength of the flare nut, the size of some of them has been increased.



- ① Refrigerant piping flare connection (liquid φF copper tube)
- ② Refrigerant piping flare connection (gas φG copper tube)
- ③ Drain pipe R1 (PTT) (O.D. 34(1-11/32"))
- ④ Electrical parts box
- ⑤ Drain Pump (Option)
- ⑥ Drain Hose (Option) ...Flexible joint (I.D.φ 32(1-1/4")) Set
- ⑦ Filter



Be sure to apply the air filter (field supply) near the air inlet grille.



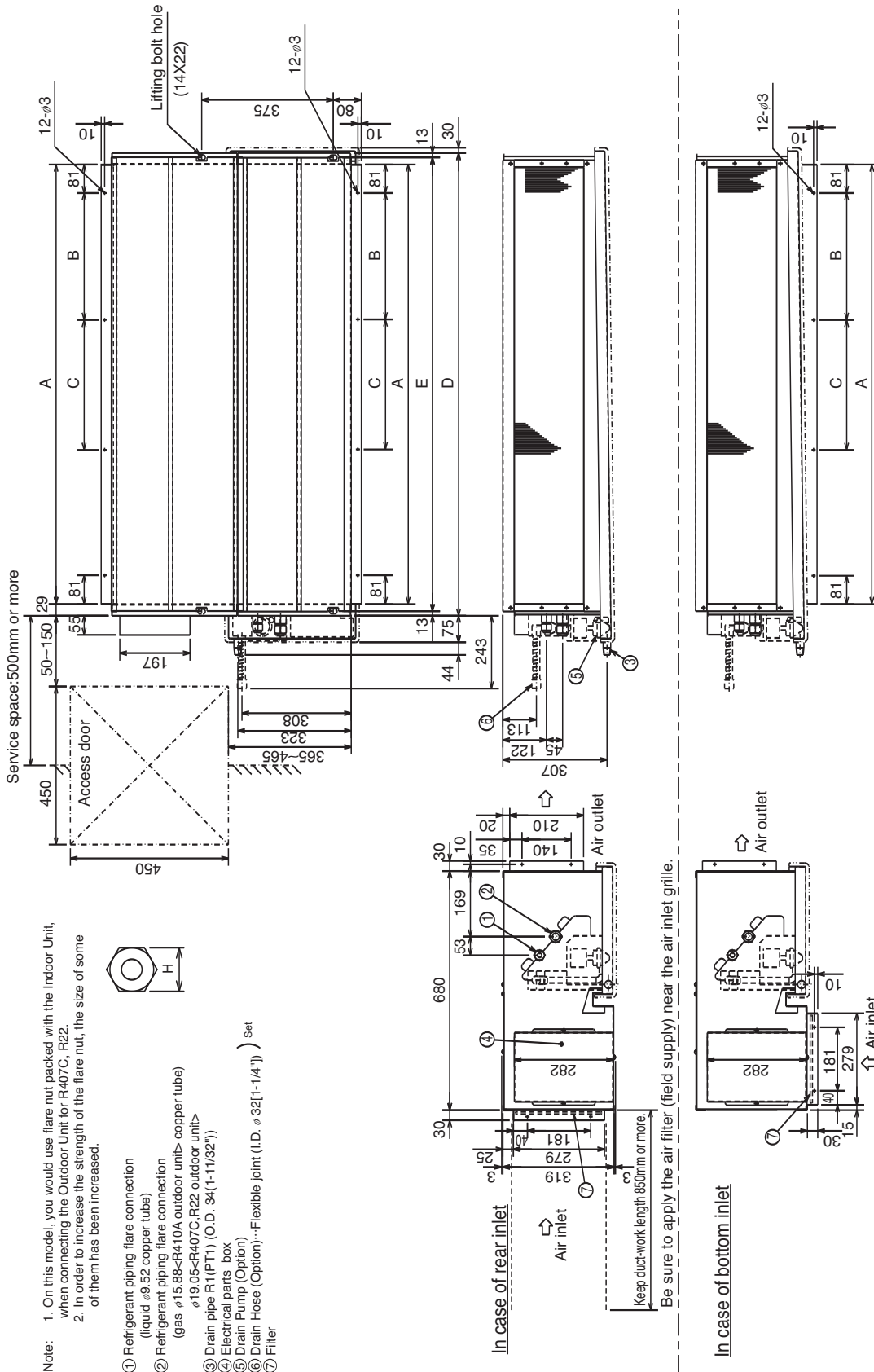
Model	A	B	C	D	E	F	G	H(Liquid)	H(Gas)
P20,25,32	652	245	-	710	684	6.35	12.7	17	27
P40	772	305	-	830	804	6.35	12.7	17	27
P50	772	305	-	830	804	*1	6.35	*1	22
P63,80	1012	280	290	1070	1044	9.52	*2	15.88	*2
									22
									29

*1: R410A outdoor unit
*2: R407C, R22 outdoor unit

PEFY-P100,125VMM-E

Drw. : IU-W65-3949

Unit : mm



2. EXTERNAL DIMENSIONS

R410A Data G4

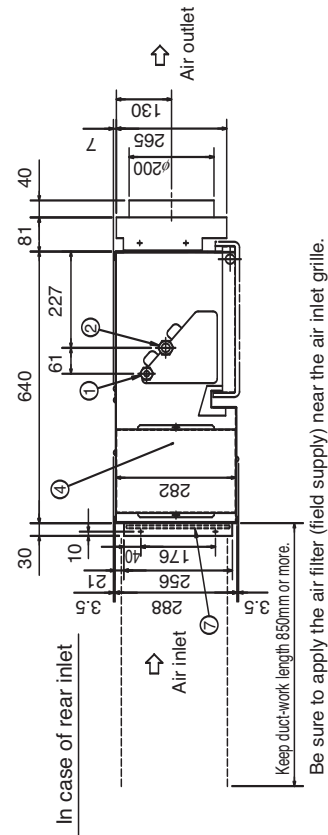
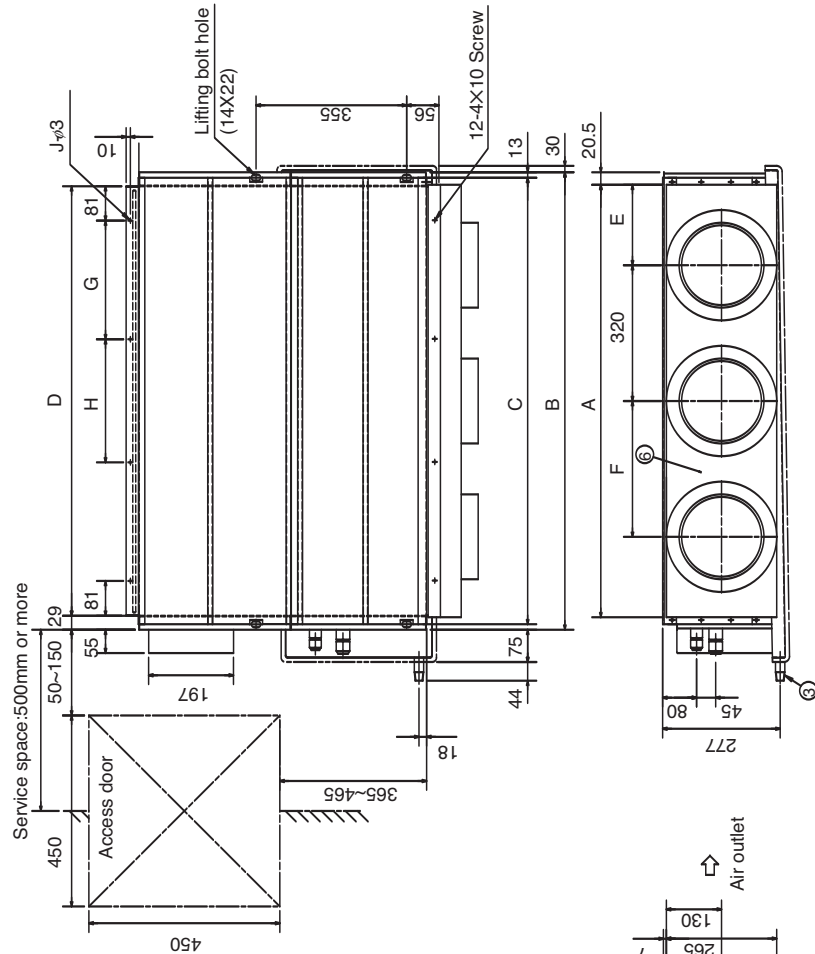
PEFY-P20,25,32,40,50,63,80VMM-E with circular duct flange

Drw. : IU-W65-3948-1
Unit : mm

Model	A	B	C	D	E	F	G	H	J
P20,25,32	669	710	684	652	174.5	—	245	—	10
P40,50	789	830	804	772	234.5	—	305	—	10
P63,80	1029	1070	1044	1012	194.5	320	280	290	12

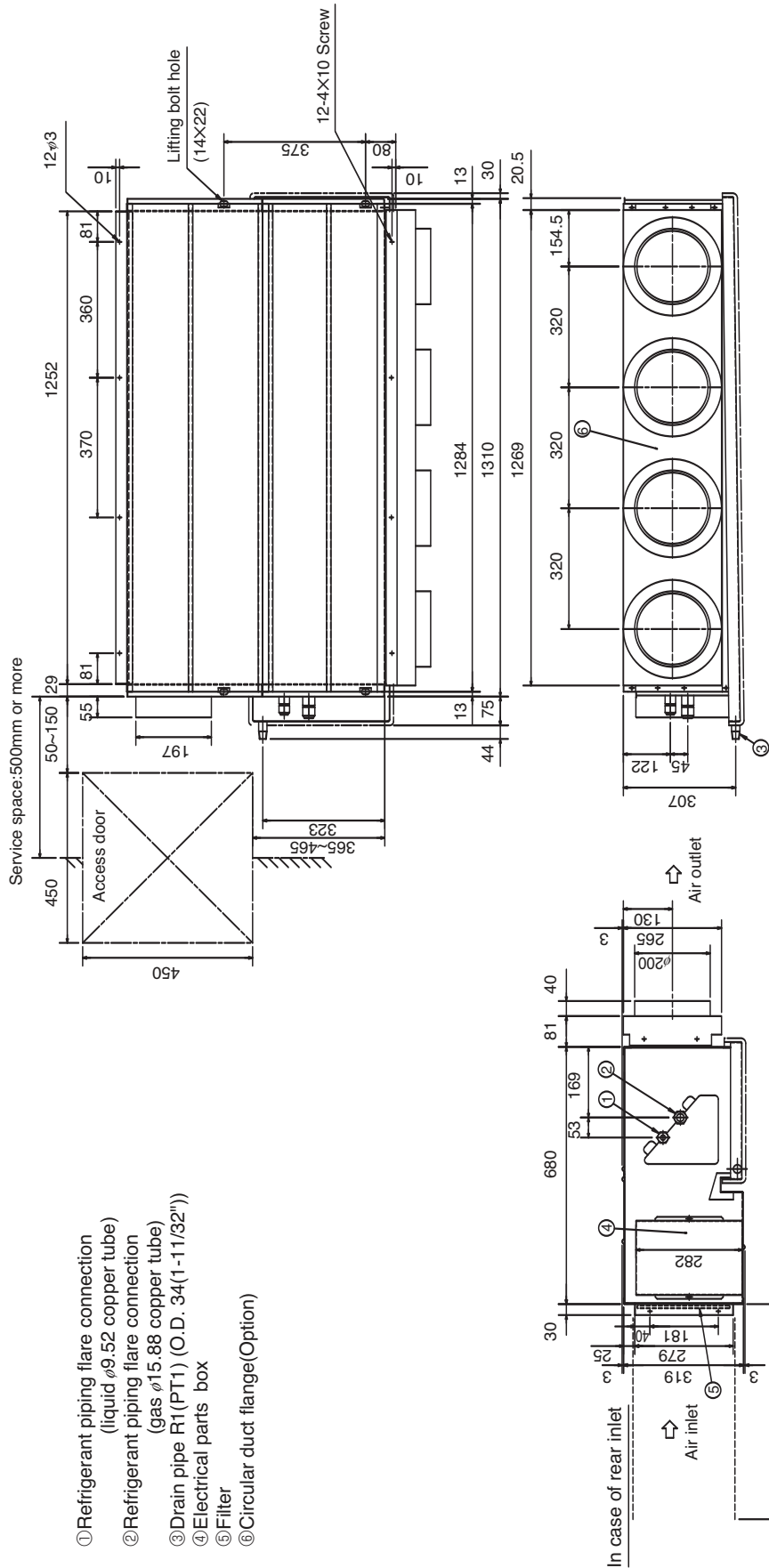
- ① Refrigerant piping flare connection (liquid ϕ K copper tube)
- ② Refrigerant piping flare connection (gas ϕ L copper tube)
- ③ Drain pipe R1 (PT1) (O.D. 34(1-11/32"))
- ④ Electrical parts box
- ⑤ Filter
- ⑥ Circular duct flange (Option)

Model	K	L
P20,25,32	6.35	12.7
P40,50	6.35	12.7
P63,80	9.52	15.88



PEFY-P100,125VMM-E with circular duct flange

Draw. : IU-W65-3949-1
Unit : mm

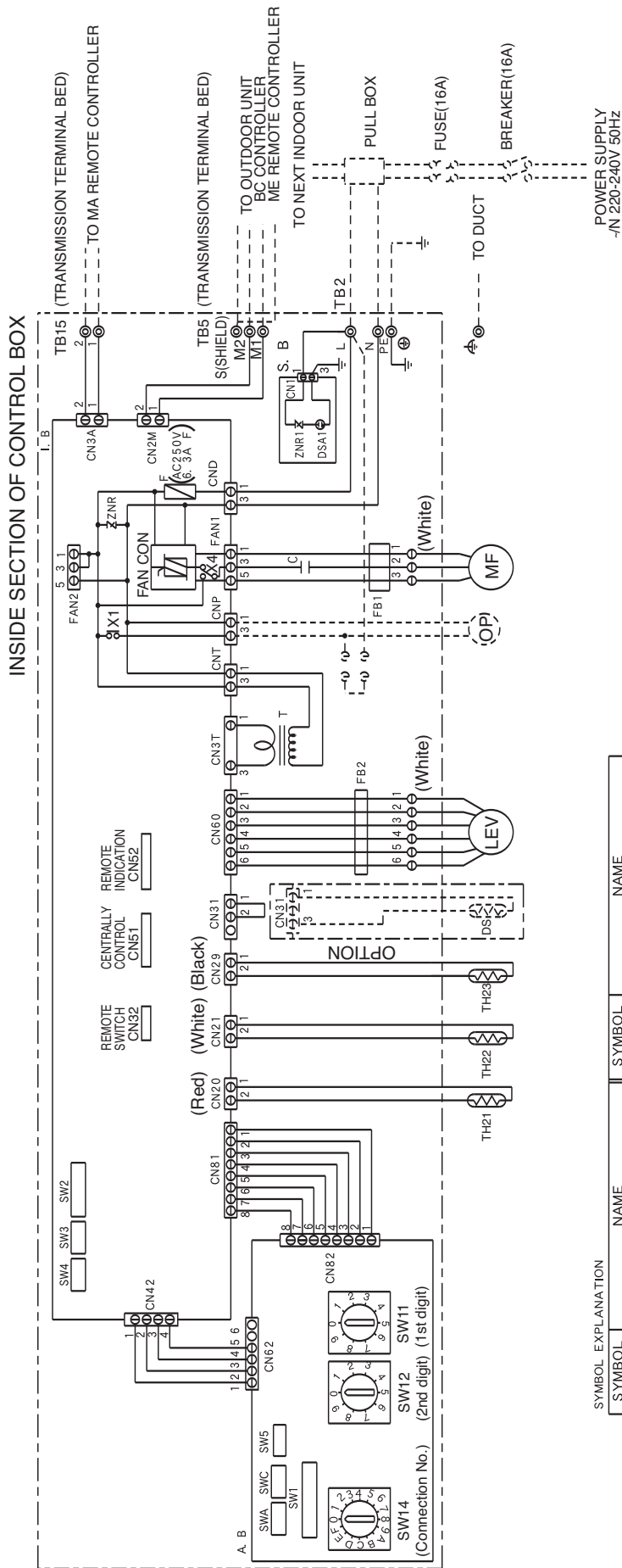


- ① Refrigerant piping flare connection (liquid $\phi 9.52$ copper tube)
- ② Refrigerant piping flare connection (gas $\phi 15.88$ copper tube)
- ③ Drain pipe R1 (PT1) (O.D. $34(1-11/32")$)
- ④ Electrical parts box
- ⑤ Filter
- ⑥ Circular duct flange (Option)

A
B
C
D
E
F
G
H
V_A
V_B
BC
CT

PEFY-P20,25,32,40,50,6380VMM-E

Draw. : IU-W65-3958



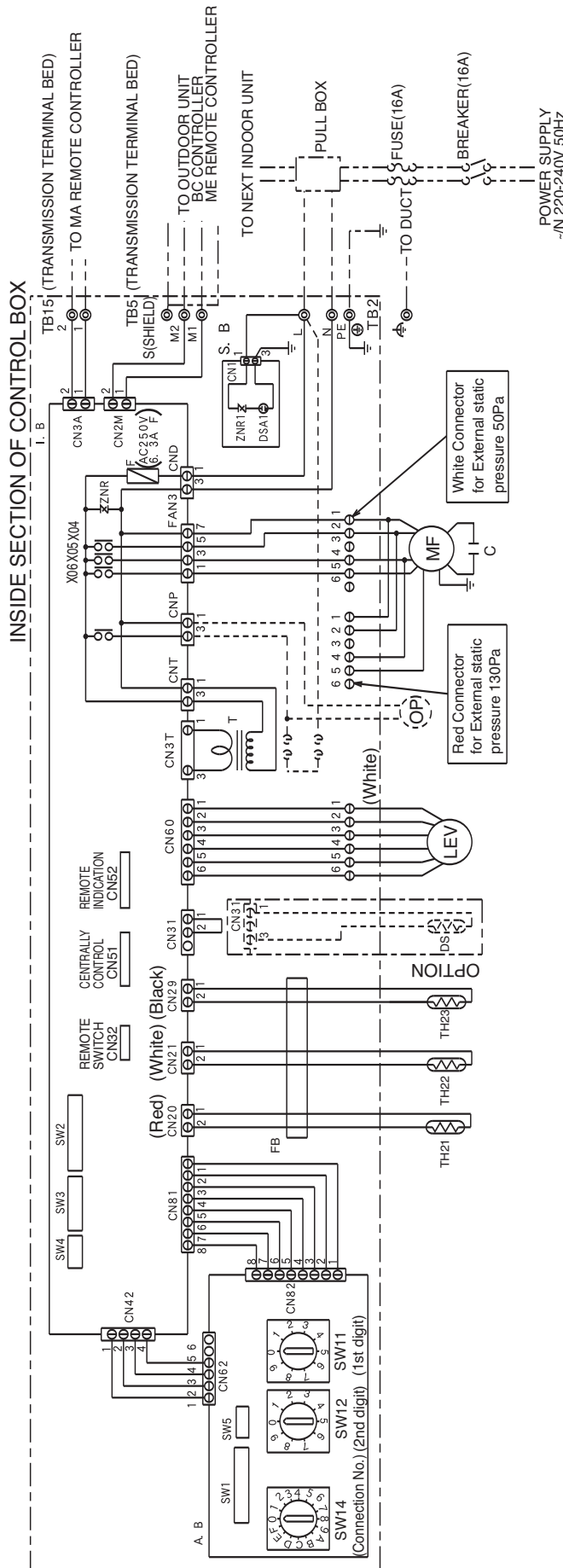
NOTE: 1. TB2, TB5 shown in dotted line are field work.
 2. Mark (C) indicates terminal bed, (E) connector, (I) board insertion connector or fastening connector of control board.
 ※ Capacitor
 MODELS 20/25/32 6 μF
 MODELS 40/50 6 μF
 MODELS 63/80 6 μF

SYMBOL EXPLANATION

SYMBOL	NAME	SYMBOL	NAME
MF	Fan motor	SWA (A,B)	Switch (option parts)
C	※Capacitor (for MF)	SWC (A,B)	Switch (option parts)
IB	Indoor controller board	SW11 (A,B)	Switch (1st digit address set)
AB	Address board	SW12 (A,B)	Switch (2nd digit address set)
TB2	Power source terminal bed	SW14 (A,B)	Switch (connection No.set)
TB5	Transmission terminal bed	SW1 (A,B)	Switch (for mode selection)
TB15	Transmission terminal bed	SW2 (I,B)	Switch (for capacity code)
F	Fuse AC250V 6.3AF	SW3 (I,B)	Switch (for mode selection)
T	Transformer	SW4 (I,B)	Switch (for model selection)
LEV	Electronic linear expans. valve	SW5 (A,B)	Switch (for voltage selection)
TH21	Thermistor (inlet temp./detection)	FB1, 2	Ferrite core
TH22	Thermistor (piping temp./detection/liquid)	SB	Surge absorber board
TH23	Thermistor (piping temp./detection/gas)	DP	Drainpump
		DS	Drainsensor

PEFY-P100,125VMM-E

Draw. : IU-W65-3959



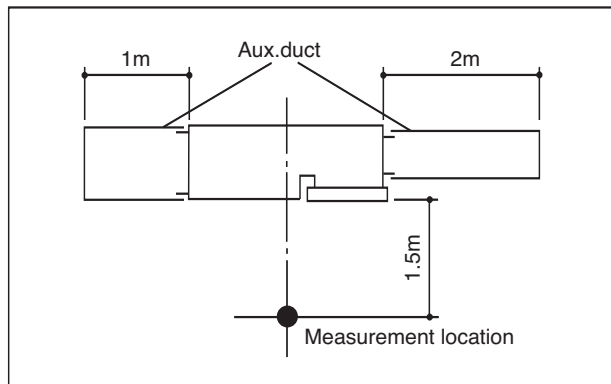
NOTE: 1. TB2, TB5 shown in dotted line are field work.
 2. Mark indicates terminal bed, board insertion connector or fastening connector of control board.
 ※Capacitor MODELS 100/125 50μF

SYMBOL EXPLANATION

SYMBOL	NAME	SYMBOL	NAME
MF	Fan motor	TH22	Thermistor (piping temp.detection/liquid)
C	Capacitor (for MF)	TH23	Thermistor (piping temp.detection/gas)
I.B	Indoor controller board	SW11 (A.B)	Switch (1st digit address set)
AB	Address board	SW12 (A.B)	Switch (2nd digit address set)
TB2	Power source terminal bed	SW14 (A.B)	Switch (connection No.set)
TB15	Transmission terminal bed	SW1 (A.B)	Switch (for mode selection)
TB5	Transmission terminal bed	SW2 (I.B)	Switch (for mode code)
F	Fuse AC250V 6.3A F	SW3 (I.B)	Switch (for model selection)
T	Transformer	SW4 (I.B)	Switch (for model selection)
LEV	Electronic linear expan. valve	SW5 (A.B)	Switch (for voltage selection)
S.B	Surge absorber board	X0.4~0.6	Aux. relay
FB	Ferrite core	DP	Drainpump
TH21	Thermistor (inlet temp.detection)	DS	Drainsensor

4-1. Sound levels

PEFY-P-VMM-E



* Measured in anechoic room.

Sound level at anechoic room : Low-Mid-High

	Sound level dB (A)		
	Low	Mid	High
PEFY-P20VMM-E	23-28-31	27-30-32	29-34-39
PEFY-P25VMM-E			
PEFY-P32VMM-E	26-30-33	28-32-35	32-36-39
PEFY-P40VMM-E	29-32-35	31-34-37	33-37-41
PEFY-P50VMM-E	29-34-37	31-35-38	34-38-41
PEFY-P63VMM-E	30-34-37	31-35-38	34-38-41
PEFY-P80VMM-E	31-34-37	32-36-39	35-39-42
PEFY-P100VMM-E	40-44	-	43-47
PEFY-P125VMM-E	42-45	-	44-47

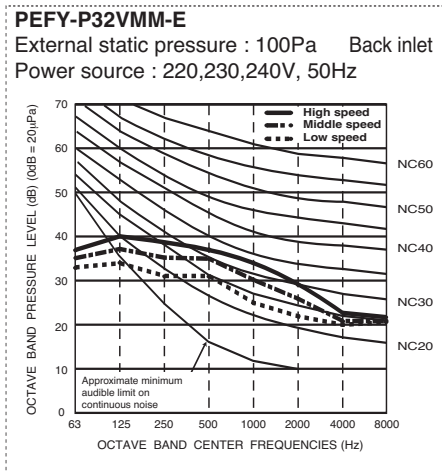
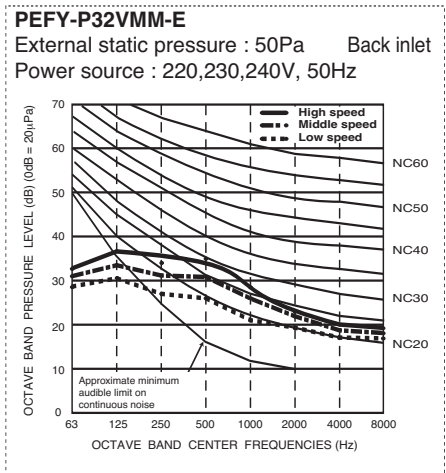
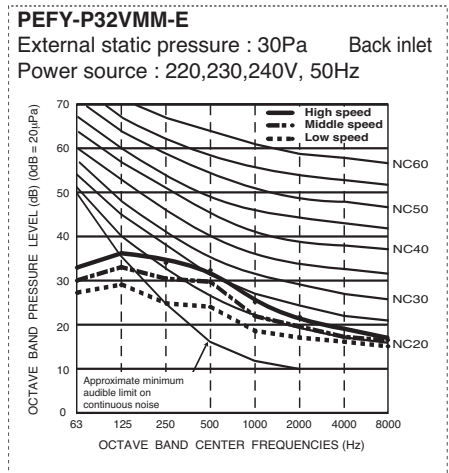
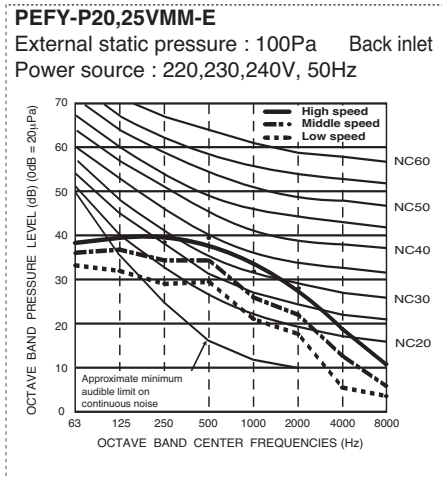
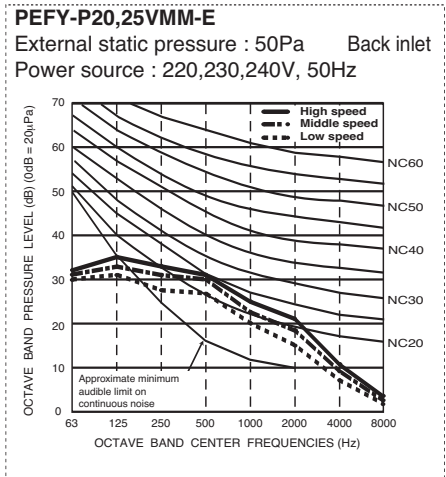
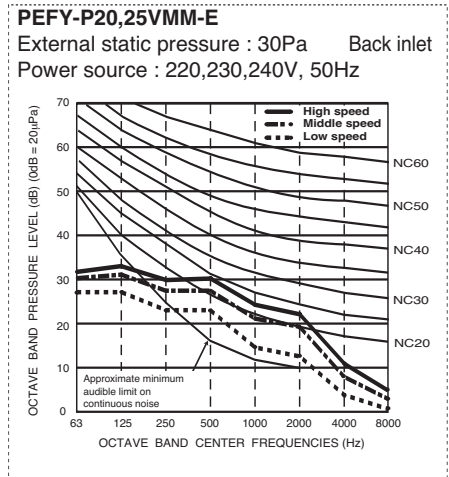
* External static pressure of PEFY-P20~80VMM-E

Low : 30Pa at 220,230,240V, 50Hz
 Mid : 50Pa at 220,230,240V, 50Hz
 High : 100Pa at 220,230,240V, 50Hz

* External static pressure of PEFY-P100~140VMM-E

Low : 50Pa at 220,230,240V, 50Hz
 High : 130Pa at 220,230,240V, 50Hz

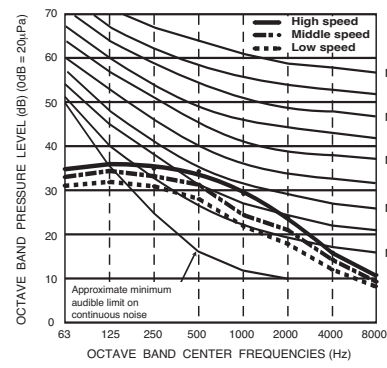
4-2. NC curves



4-2. NC curves

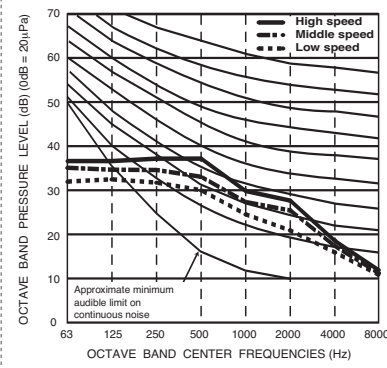
PEFY-P40VMM-E

External static pressure : 30Pa Back inlet
Power source : 220,230,240V, 50Hz



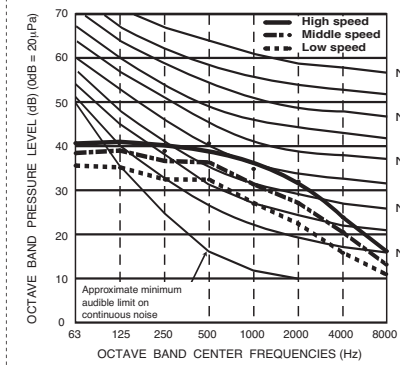
PEFY-P40VMM-E

External static pressure : 50Pa Back inlet
Power source : 220,230,240V, 50Hz



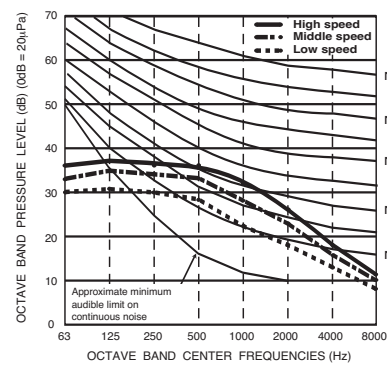
PEFY-P40VMM-E

External static pressure : 100Pa Back inlet
Power source : 220,230,240V, 50Hz



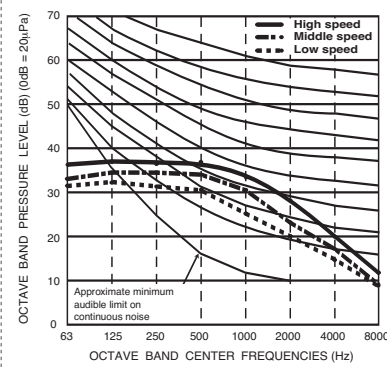
PEFY-P50VMM-E

External static pressure : 30Pa Back inlet
Power source : 220,230,240V, 50Hz



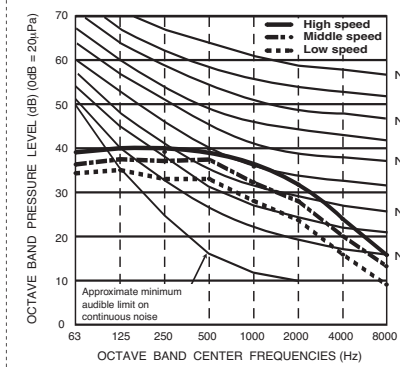
PEFY-P50VMM-E

External static pressure : 50Pa Back inlet
Power source : 220,230,240V, 50Hz



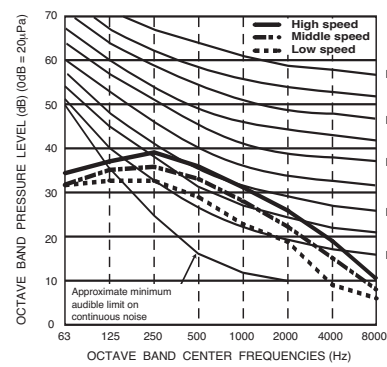
PEFY-P50VMM-E

External static pressure : 100Pa Back inlet
Power source : 220,230,240V, 50Hz



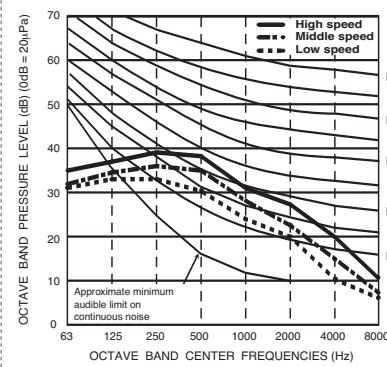
PEFY-P63VMM-E

External static pressure : 30Pa Back inlet
Power source : 220,230,240V, 50Hz



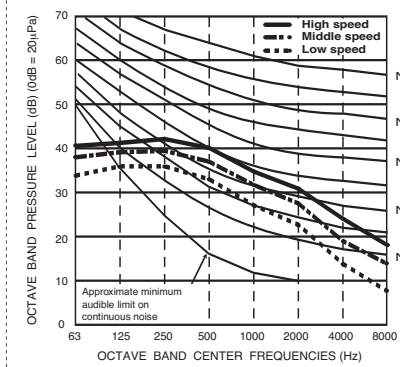
PEFY-P63VMM-E

External static pressure : 50Pa Back inlet
Power source : 220,230,240V, 50Hz



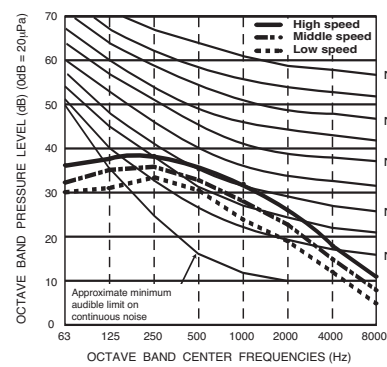
PEFY-P63VMM-E

External static pressure : 100Pa Back inlet
Power source : 220,230,240V, 50Hz



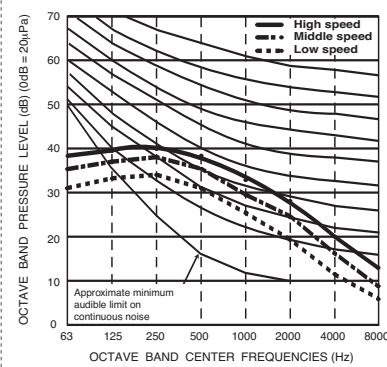
PEFY-P80VMM-E

External static pressure : 30Pa Back inlet
Power source : 220,230,240V, 50Hz



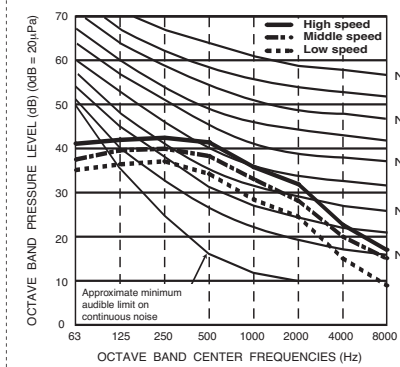
PEFY-P80VMM-E

External static pressure : 50Pa Back inlet
Power source : 220,230,240V, 50Hz

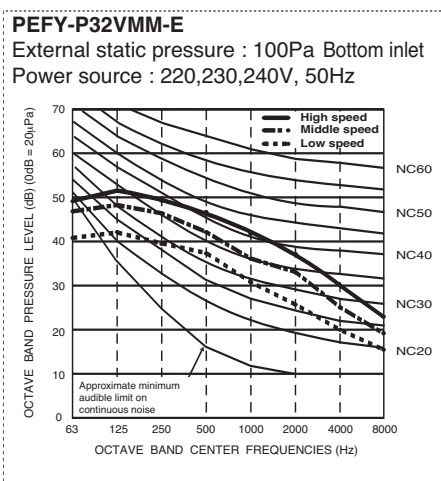
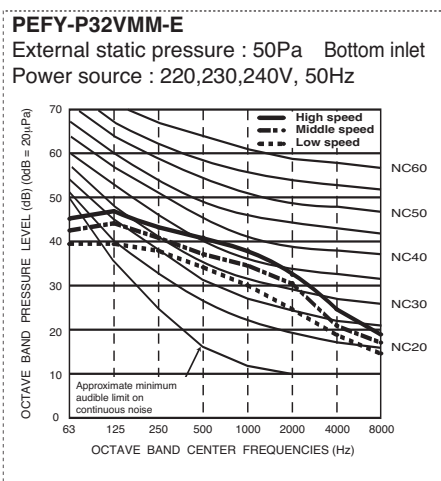
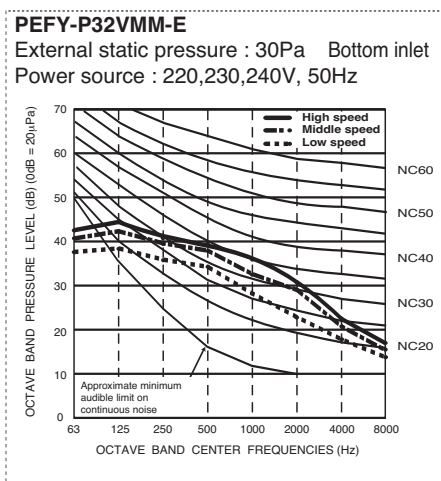
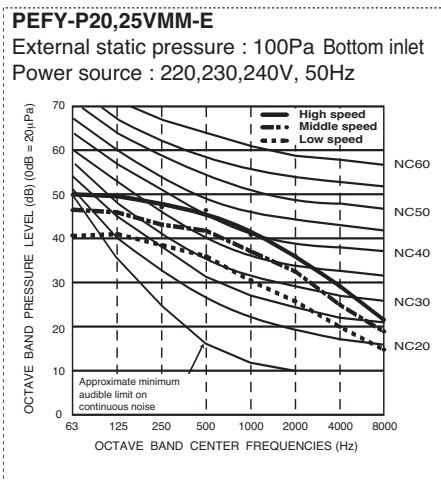
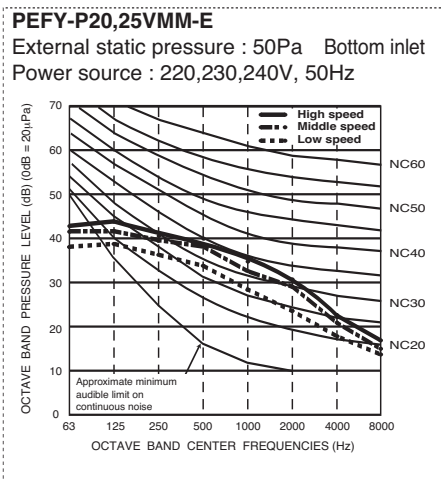
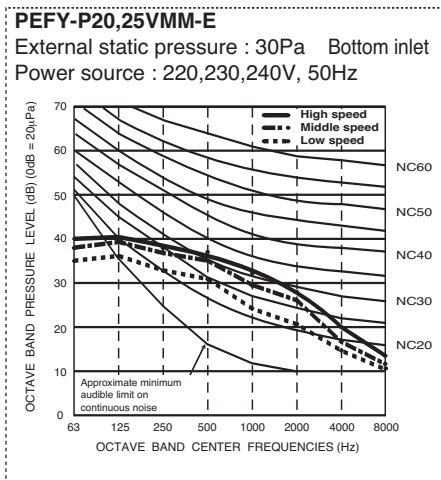
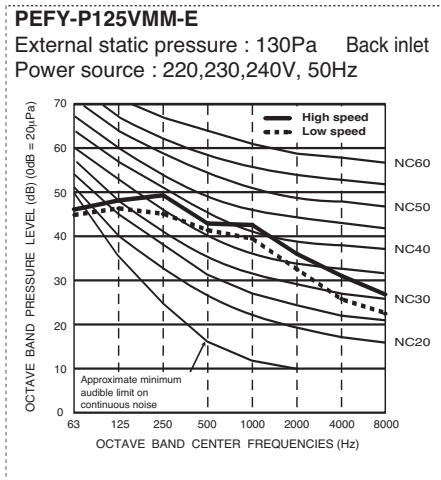
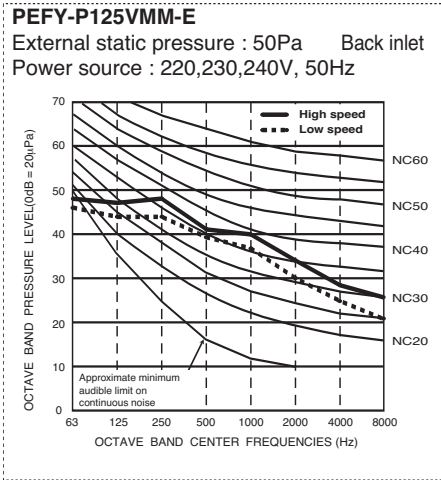
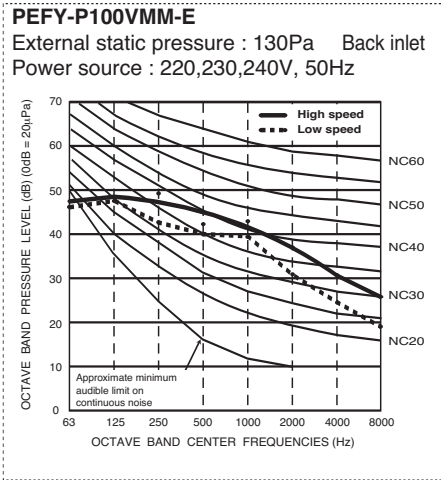
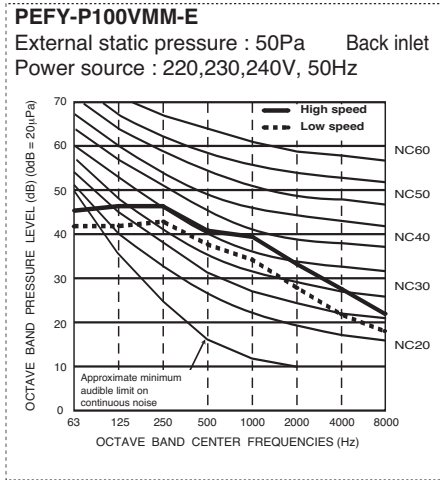


PEFY-P80VMM-E

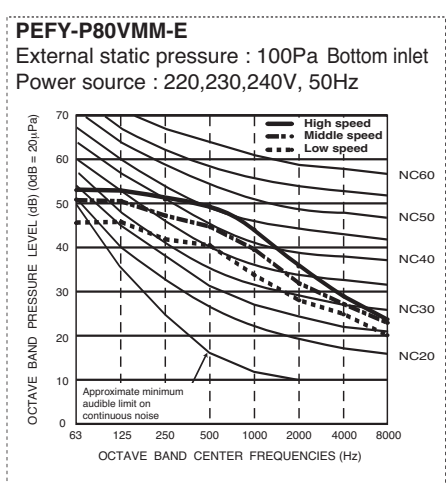
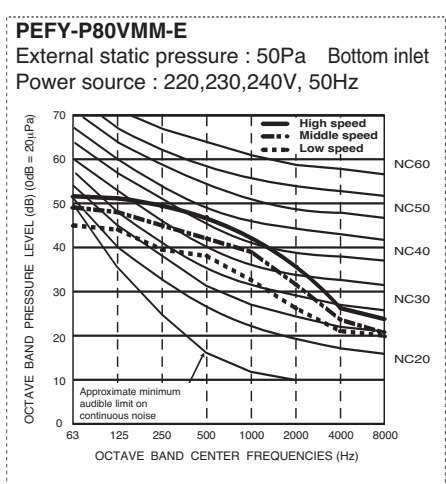
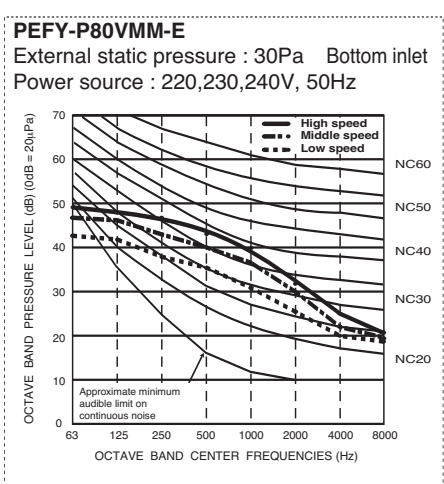
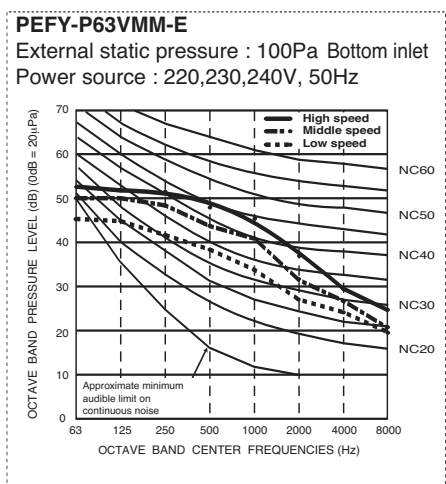
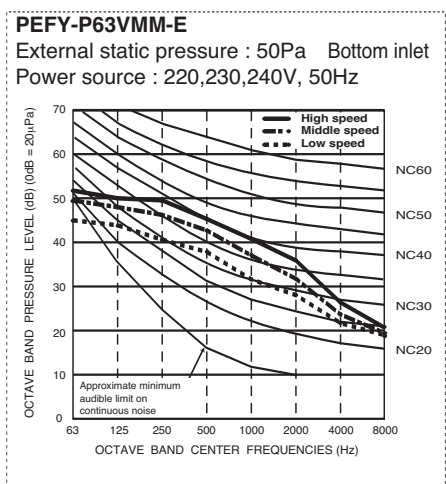
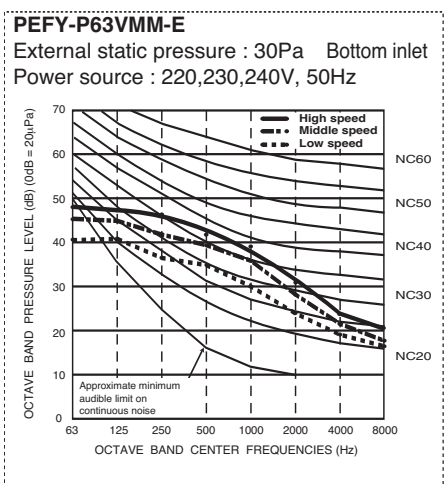
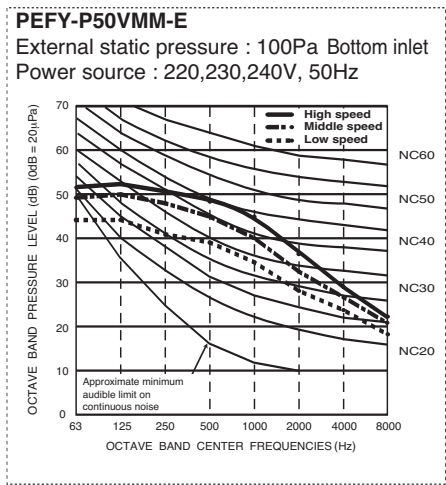
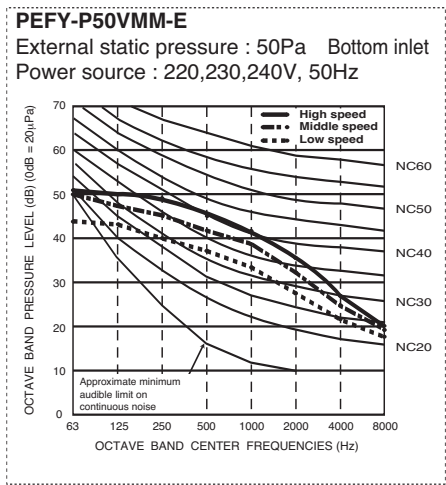
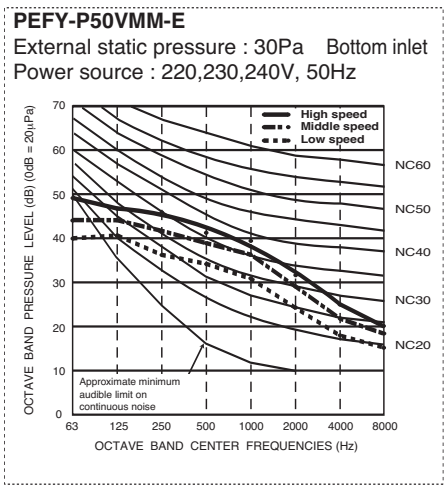
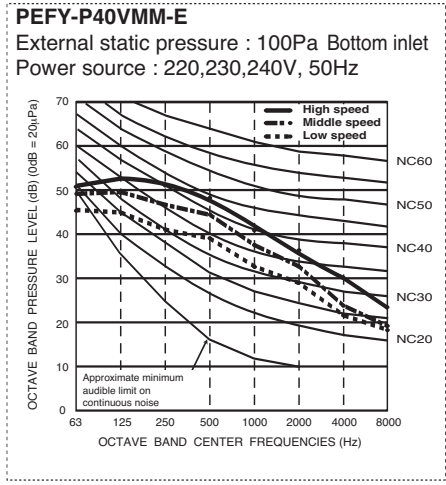
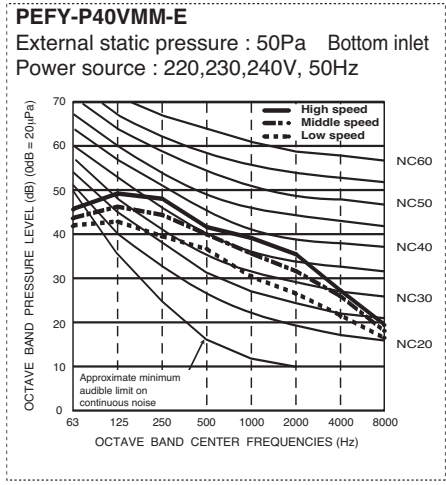
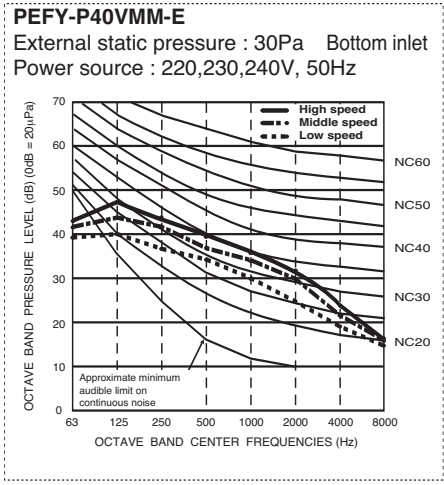
External static pressure : 100Pa Back inlet
Power source : 220,230,240V, 50Hz



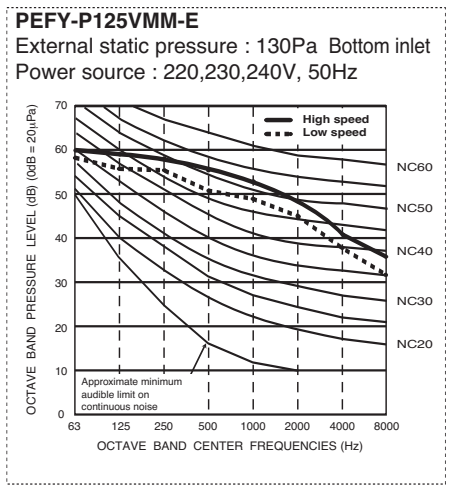
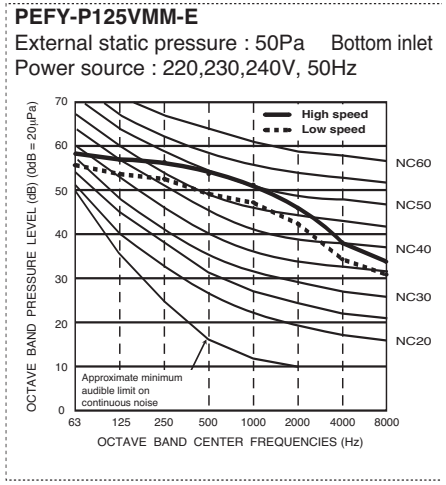
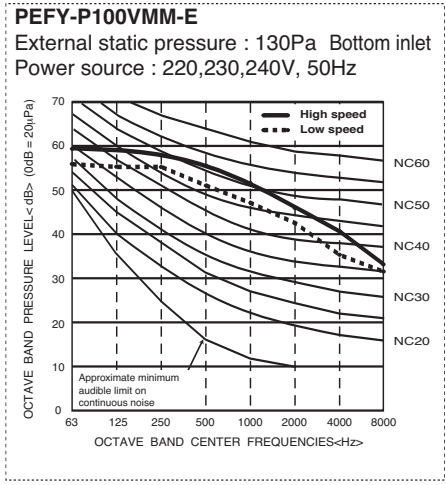
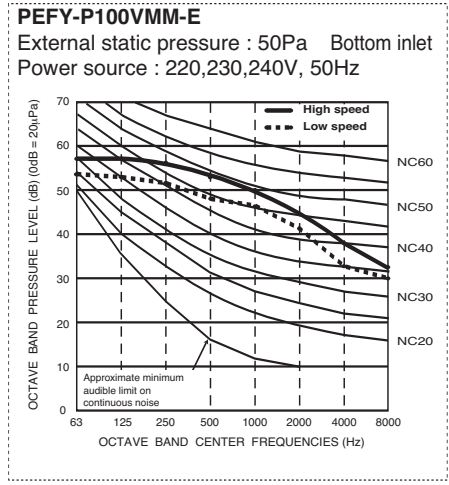
4-2. NC curves



4-2. NC curves



4-2. NC curves

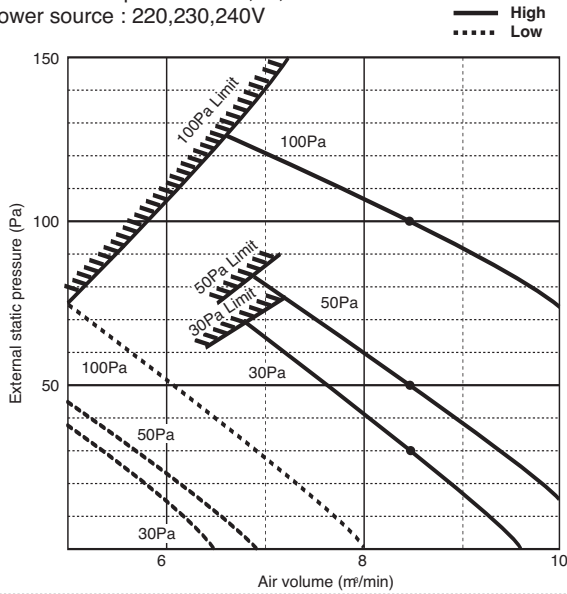


- A
- B**
- C
- D
- E
- F
- G
- H
- V_a
- V_b
- BC
- C

4-3. Fan characteristics curves

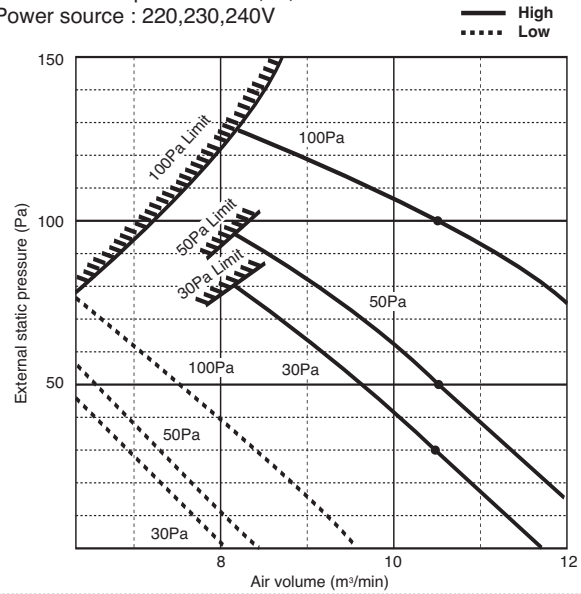
PEFY-P20,25VMM-E

External static pressure : 30,50,100Pa
Power source : 220,230,240V



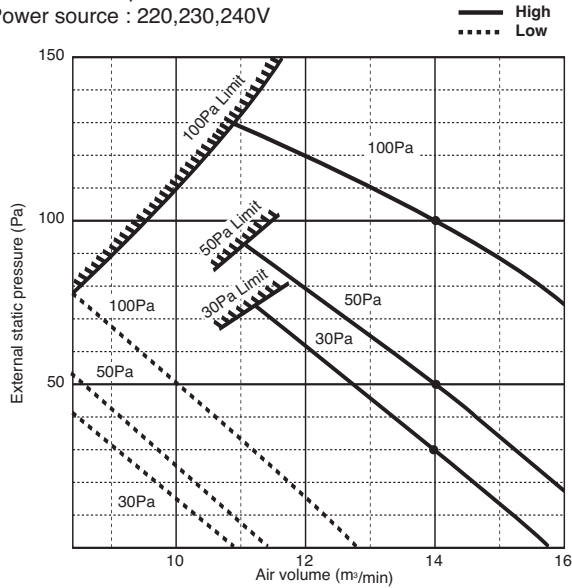
PEFY-P32VMM-E

External static pressure : 30,50,100Pa
Power source : 220,230,240V



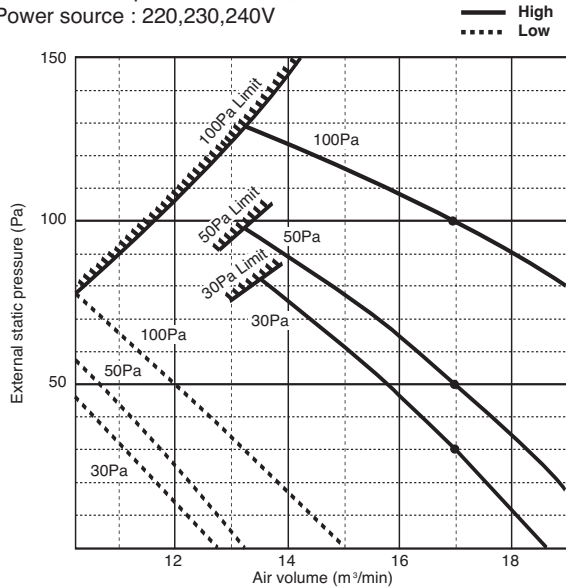
PEFY-P40VMM-E

External static pressure : 30,50,100Pa
Power source : 220,230,240V



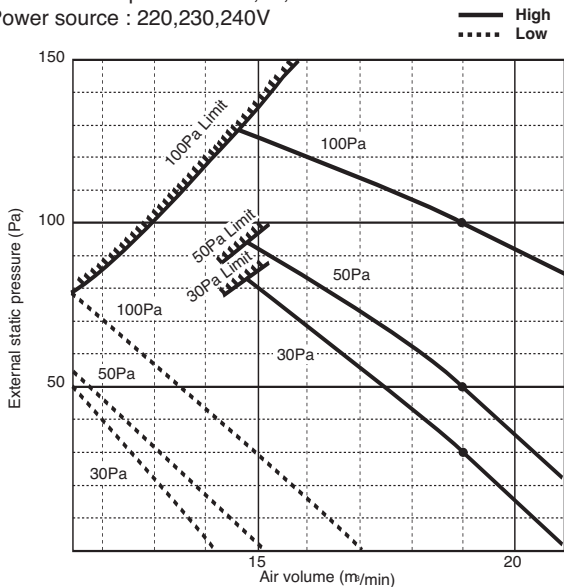
PEFY-P50VMM-E

External static pressure : 30,50,100Pa
Power source : 220,230,240V



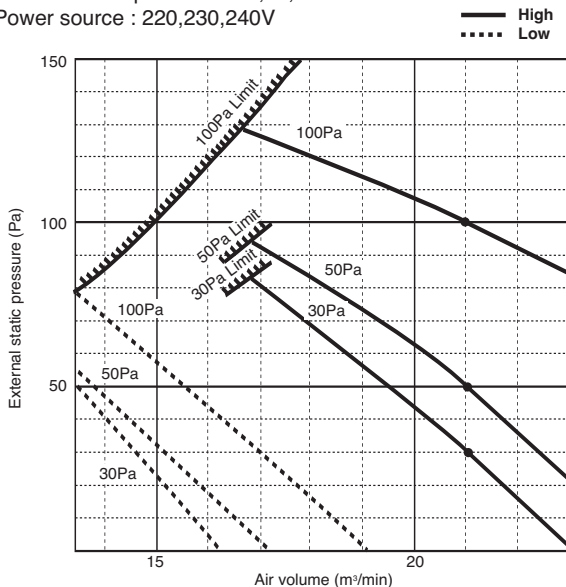
PEFY-P63VMM-E

External static pressure : 30,50,100Pa
Power source : 220,230,240V



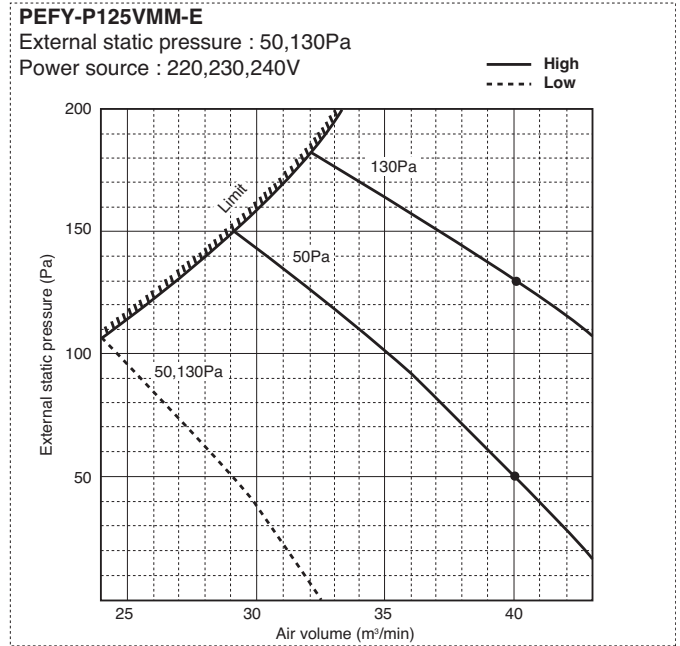
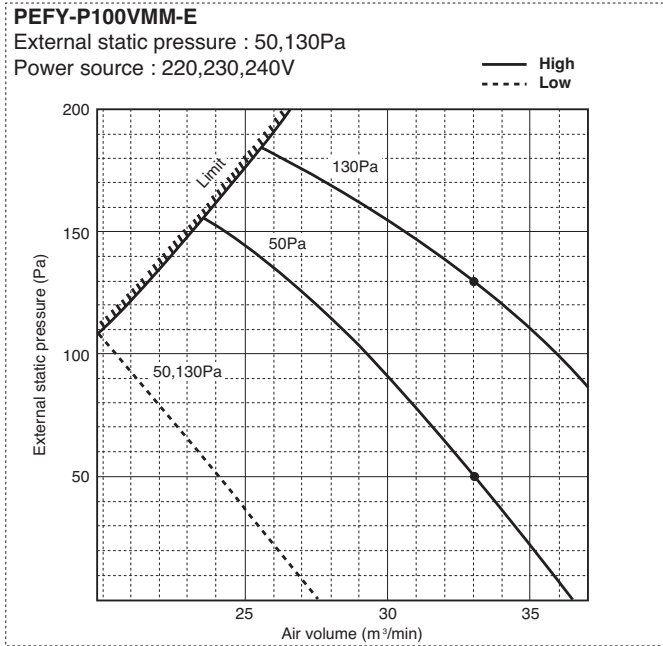
PEFY-P80VMM-E

External static pressure : 30,50,100Pa
Power source : 220,230,240V



4. SOUND LEVELS

4-3. Fan characteristics curves

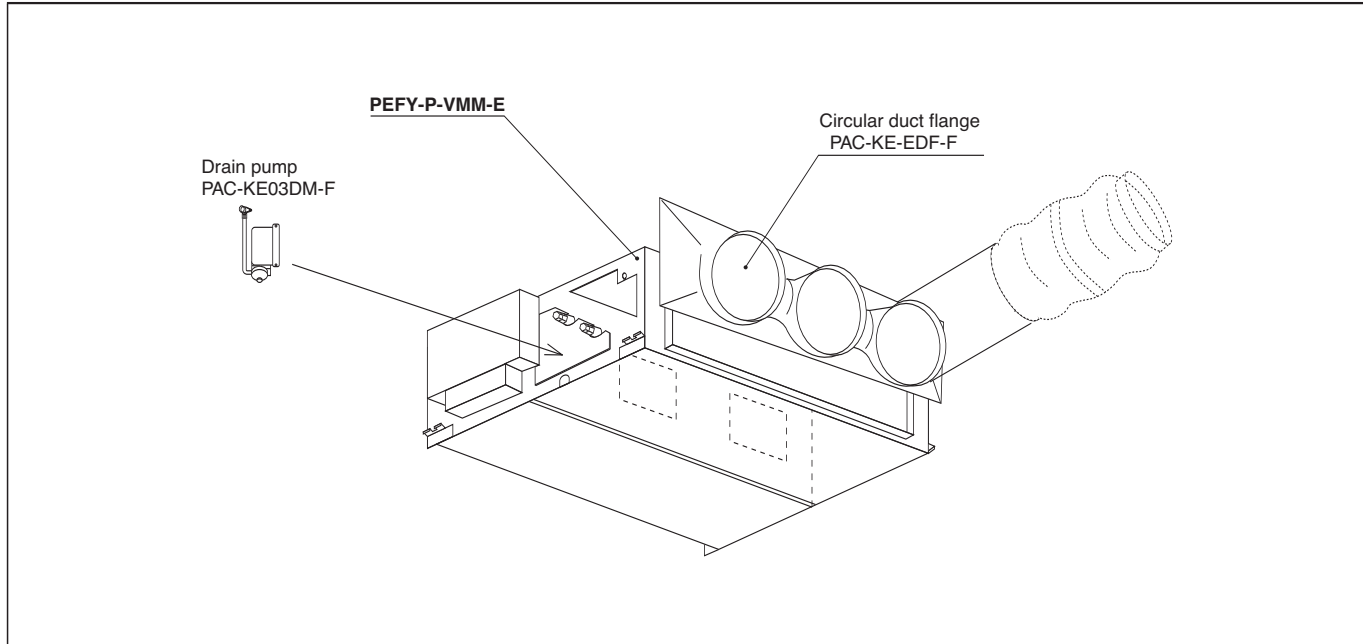


- A
- B**
- C
- D
- E
- F
- G
- H
- V_a
- V_e
- BC
- CT

Optional parts line up for the Indoor unit

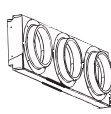
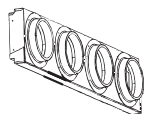

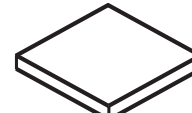
	Circular duct flange	Drain pump
PEFY-P20,25,32VMM-E	PAC-KE32EDF-F	PAC-KE03DM-F
PEFY-P40,50,VMM-E	PAC-KE50EDF-F	PAC-KE03DM-F
PEFY-P63,80VMM-E	PAC-KE80EDF-F	PAC-KE03DM-F
PEFY-P100,125VMM-E	PAC-KE125EDF-F	PAC-KE03DM-F

PEFY-P-VMM-E



Circular duct flange PAC-KE-EDF-F for PEFY-P-VMM-E

Circular duct flange PAC-KE-EDF-F makes air ducting and distributing easier.
 Details are referred to DATA G2 IU-B-31 to 33.
 Material:

Item	① Circular duct flange	① Circular duct flange	
Quantity	1	1	
Shape	<for PEFY-P20, 25, 32, 40, 50, 63, 80VMM-E> 	<for PEFY-P100, 125VMM-E> 	
Item	② PTT screw 4X10	③ Insulation	
Quantity	12	4	
Shape			

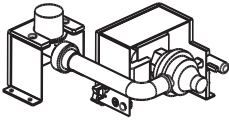
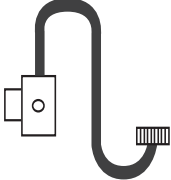
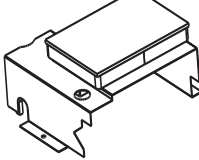
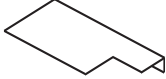
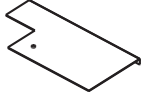

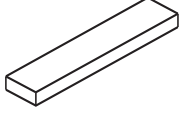
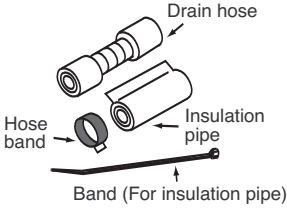


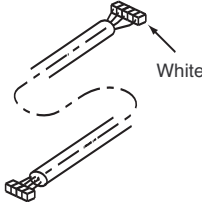
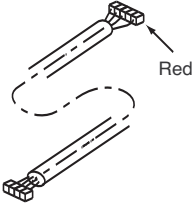


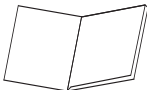
Detailed installation information should be referred to its Installation Manual (WT03437X01)

5. Optional parts for PEFY-P-VMM-E

R410A Data G4

■ Drain pump PAC-KE03DM-F

If drain water can not flow out the Indoor unit by gravity and gradient, a Drain-pump for draining is needed.
Drain pump PAC-KE03DM-F can pump water up to 550mm high from the drain pan.

Item	① Drain pump ass'y	② Drain sensor	③ Pump cover ass'y	④ Drain pan cover
Quantity	1	1	1	1
Shape				
Item	⑤ Drain pan cover	⑥ Rubber plug	⑦ Insulation	⑧ Drain hose set
Quantity	1	1	1	1
Shape				
Item	⑨ Lead wire(Pump)	⑩ Lead wire(Pump)	⑪ Lead wire(Sensor)	⑫ Lead wire(Sensor)
Quantity	1	1	1	1
Shape				
Item	⑬ Band	⑭ PTT screw 4X10	⑮ Installation manual	
Quantity	3	8+1 (Spare)	1	
Shape				

Detailed installation information should be referred to its Installation Manual (WT03396X01)

- A
- B**
- C
- D
- E
- F
- G
- H
- V_A
- V_B
- EC
- CT